

Version
1.3

2016/11/24

Wi-Fi Connection User Guide

Version History

Version No.	Date	Created / Updated by	Description
1.0	2016-10-13	ITSO	New document
1.1	2016-11-16	ITSO	New methods for connecting devices
1.2	2016-11-23	ITSO	New cr Interface
1.3	2016-11-24	ITSO	Android English interface update

Contents

Register Your Devices for Wi-Fi Services.....	3
Find the MAC Address of a Windows Device.....	4
Find the MAC Address of a Mac OSX Device.....	7
Find the MAC Address of an iPhone Device.....	9
Find the MAC Address of an Android Device.....	10
Connect to Wi-Fi Services	11
Connect Wi-Fi on Windows 10 Computer.....	11
Connect Wi-Fi on Windows 7 Computer.....	13
Connect Wi-Fi on Mac OSX Computer	15
Connect Wi-Fi on iPhone Device.....	16
Connect Wi-Fi on Android Device.....	18


Register Your Devices for Wi-Fi Services

To use the campus WIFI service, staffs have to register their devices' MAC address.

Step 1: Go to the URL: <http://cr.chuhai.edu.hk/rpass>, and login to the system

Enter your username and password

A service has requested you to authenticate yourself. Please enter your username and password in the form below.



Username	<input type="text"/>	←
Password	<input type="password"/>	←
<input type="button" value="Login"/>		

Step 2: After login, please click “Mac Address”, then enter your current password and fill in your devices' MAC Address



珠海學院 CHU HAI COLLEGE OF HIGHER EDUCATION	Mac Address Registration
Change Password	Name: ittest
Mac Address ←	Password: ← Password
Logout	Please enter the mac address of your devices for accessing the Staff Wi-Fi. Please ignore any symbols, e.g., "-" or ":"
	<input type="button" value="Fill in More Mac Address"/>
	112233445566 (Format: XXXXXXXXXXXX) x
	↑ Devices' MAC Addresses
	<input type="button" value="Update"/>

Step 3: You may click “Fill in More Mac Address” to register more devices.

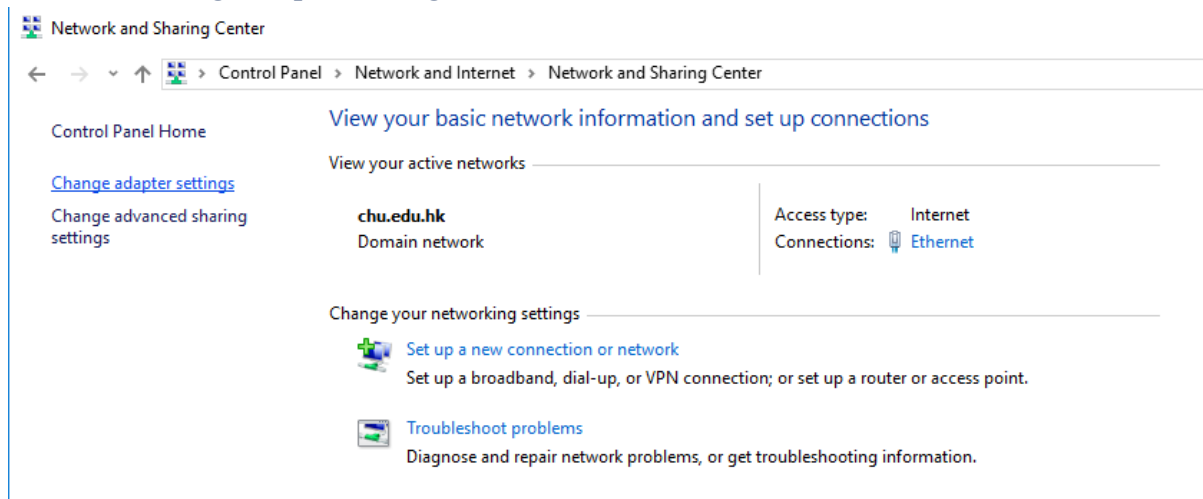


The screenshot shows the 'Mac Address Registration' page. On the left is a sidebar with the college logo and links for 'Change Password', 'Mac Address', and 'Logout'. The main area has a title 'Mac Address Registration' and fields for 'Name' (filled with 'ittest') and 'Password' (masked with dots). Below these is a text instruction: 'Please enter the mac address of your devices for accessing the Staff Wi-Fi. Please ignore any symbols, e.g., "-" or ":"'. A button labeled 'Fill in More Mac Address' is highlighted with a red box. Below it are two input fields for MAC addresses; the first contains '112233445566'. To the right of each input field is a format hint '(Format: XXXXXXXXXXXX)' and a small 'x' icon. Two blue arrows point from the right towards the input fields. At the bottom is an 'Update' button.

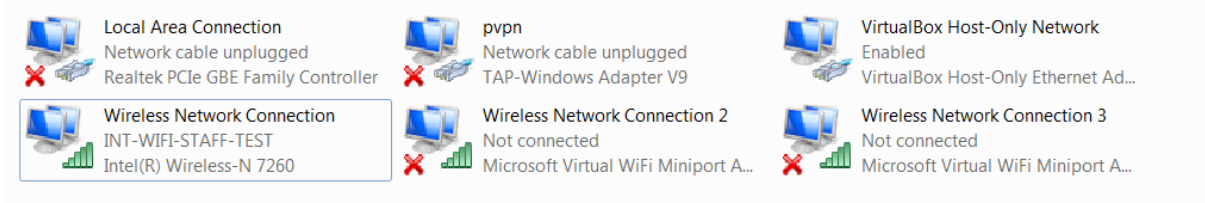
Step 4: Click “Update” for registration

Find the MAC Address of a Windows Device

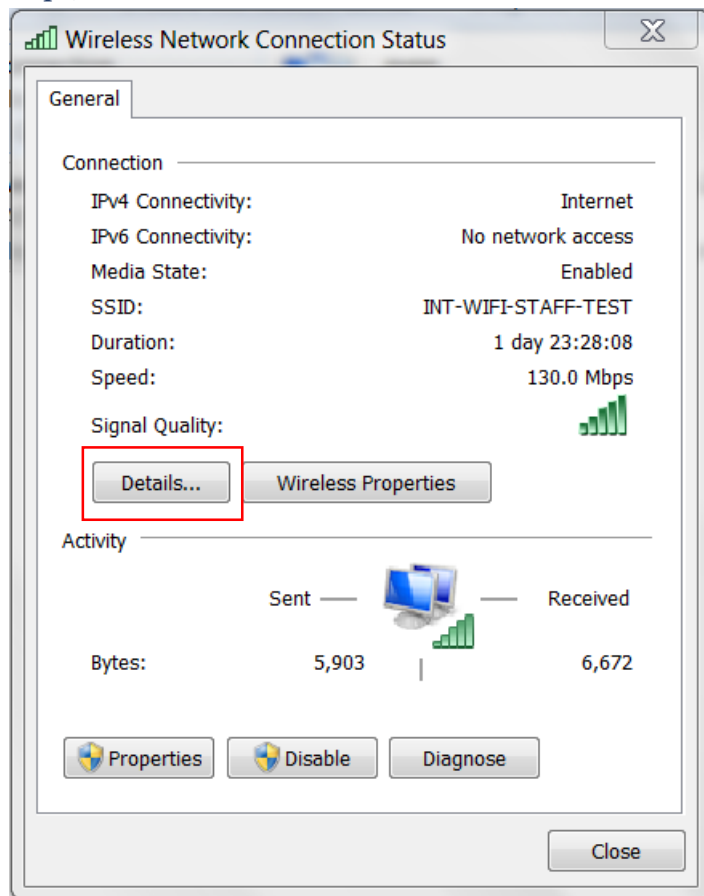
Step 1: Go to **Control Panel\Network and Internet\Network and Sharing Center** and click “Change adapter setting”.



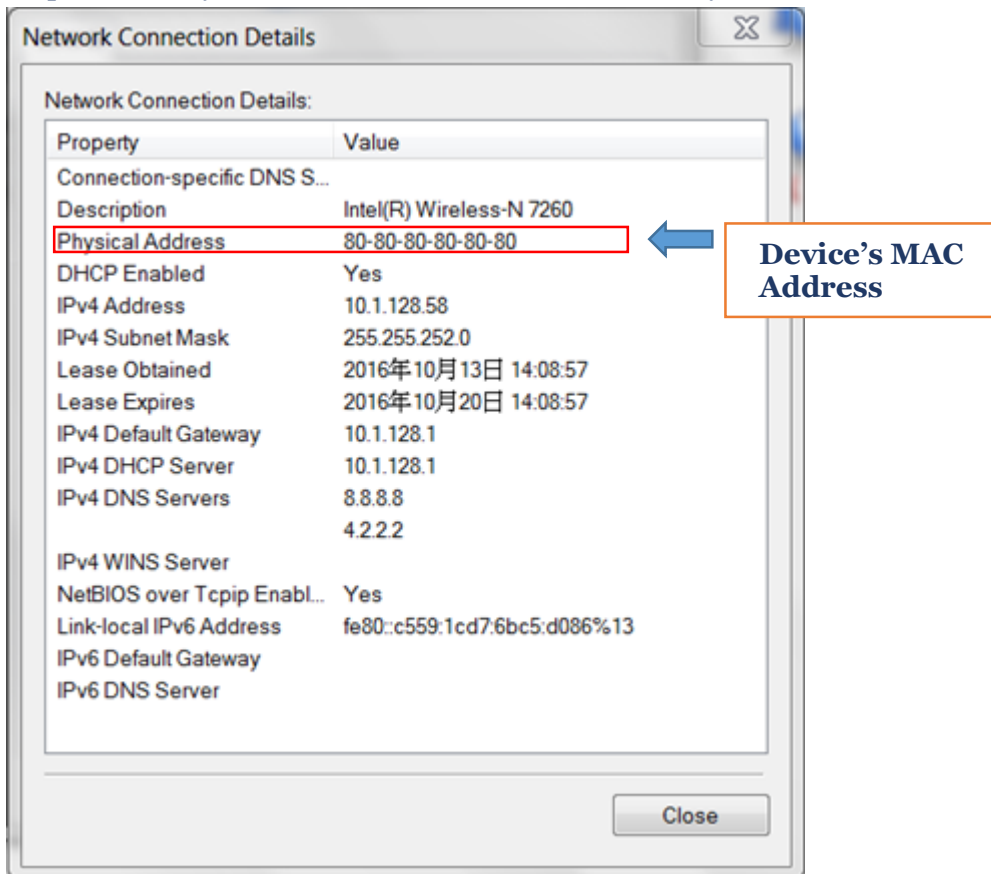
Step 2: Double Click on “Wireless Network Connection”



Step 3: Click “Details...”

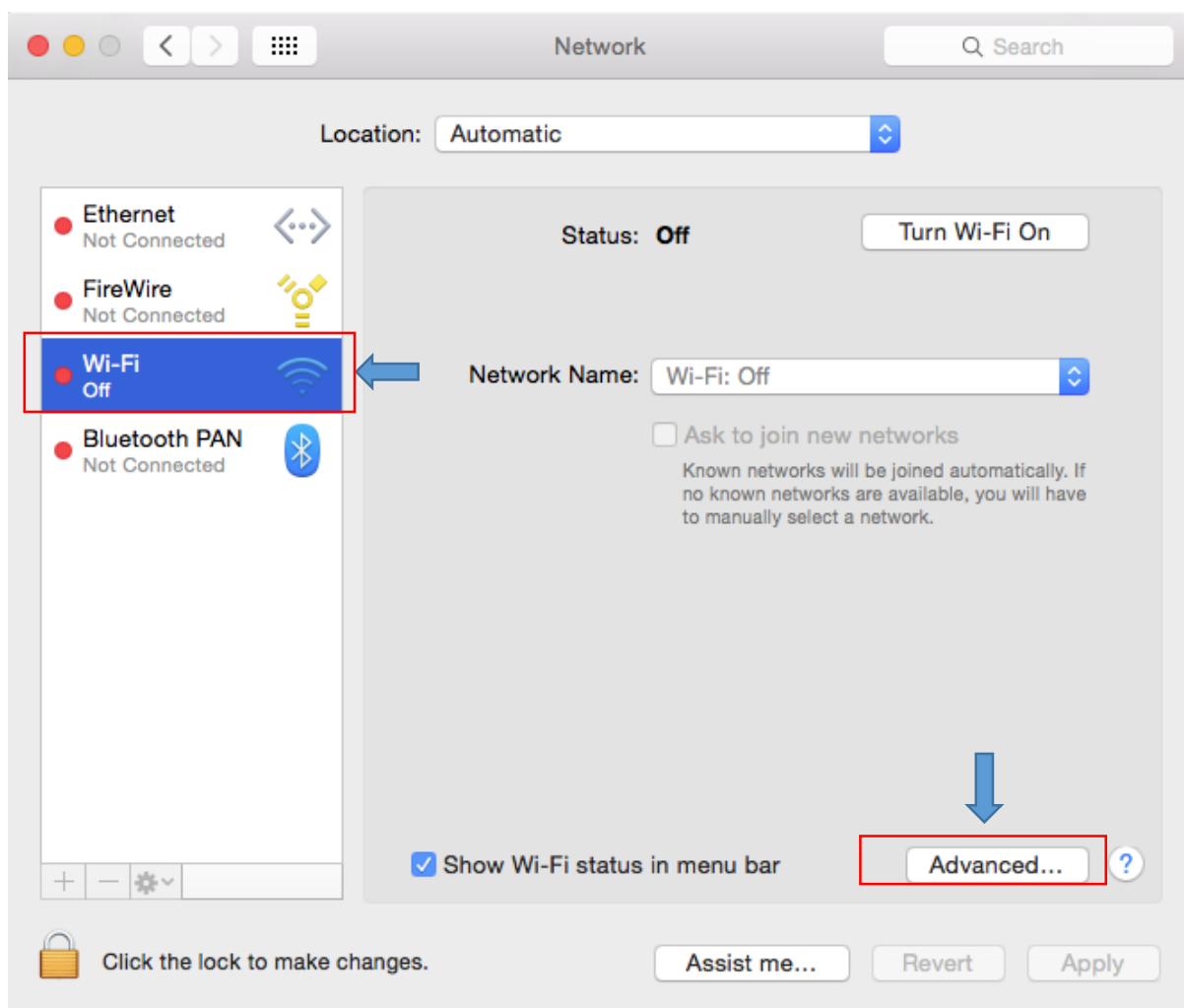


Step 4: You may find the MAC Address at the field “Physical Address”

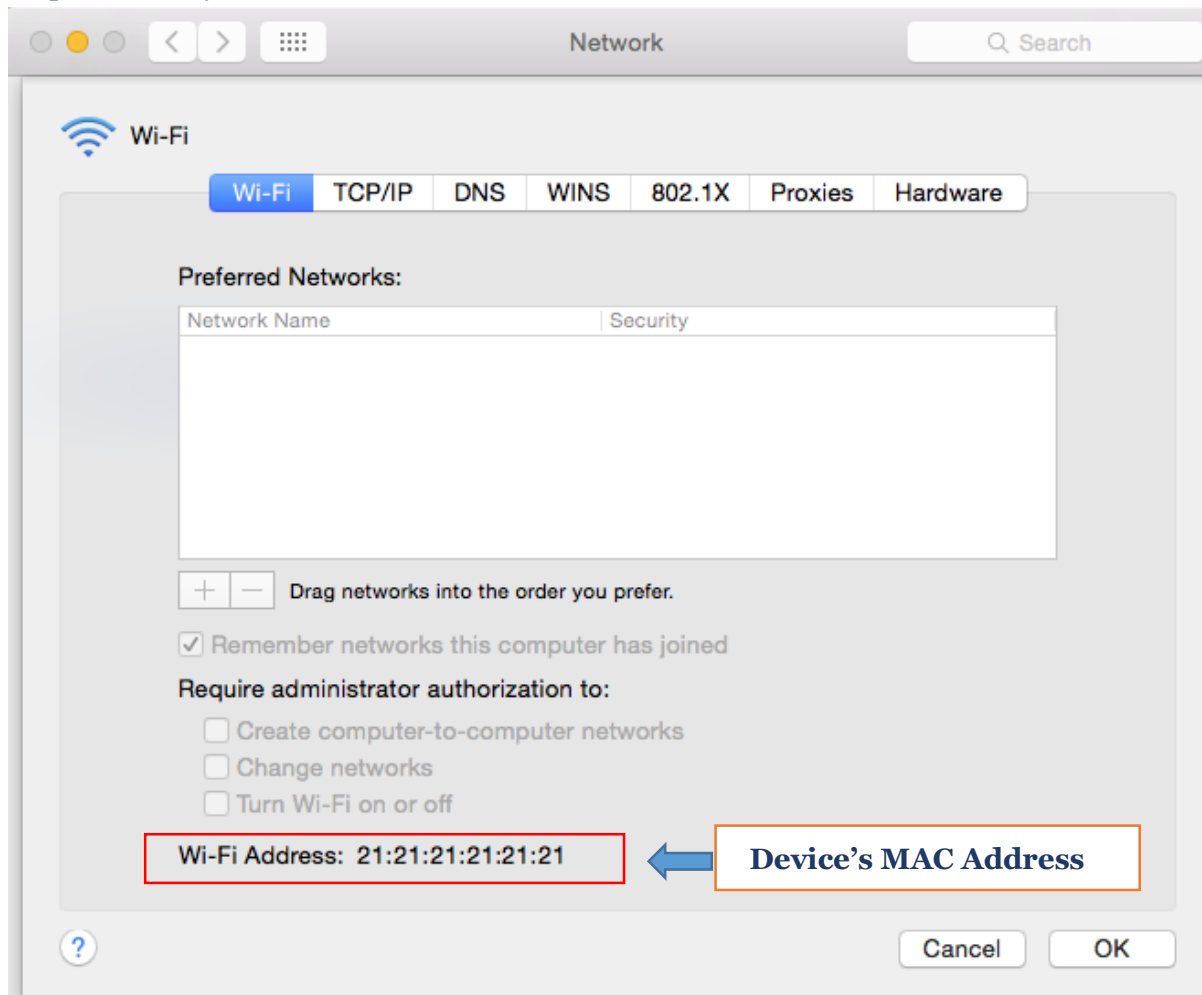


Find the MAC Address of a Mac OSX Device

Step 1: Open **System Preference > Network**, choose Wi-Fi and click “Advanced...”

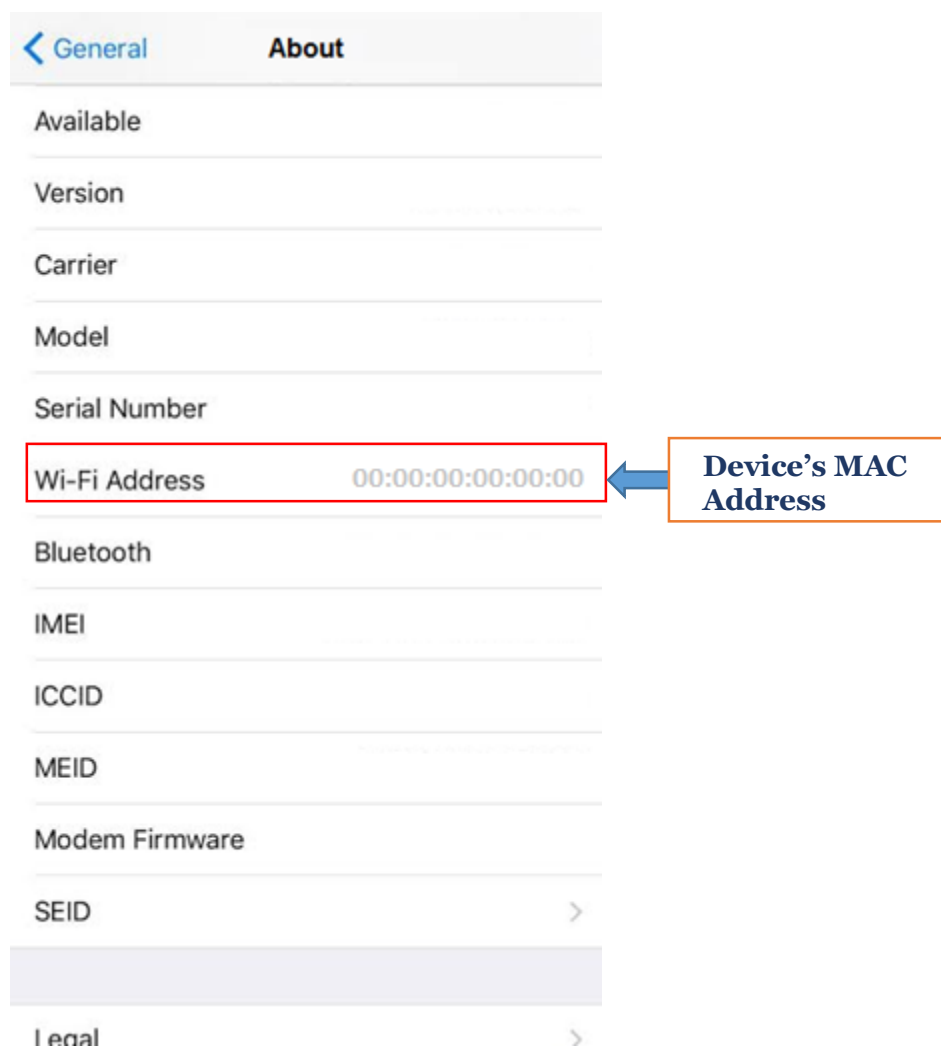


Step 2: You may find the MAC Address at the bottom




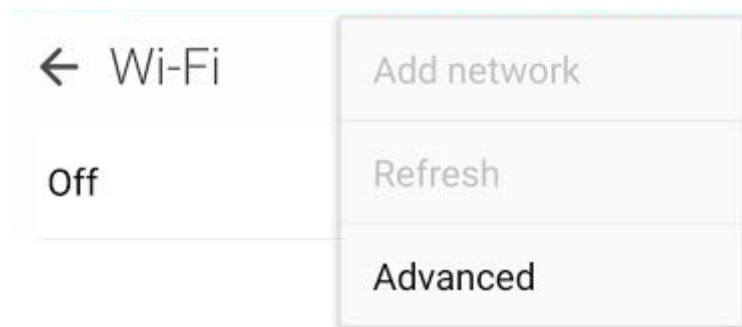
Find the MAC Address of an iPhone Device

Step 1: You may find the MAC Address by accessing **Settings > General > About**

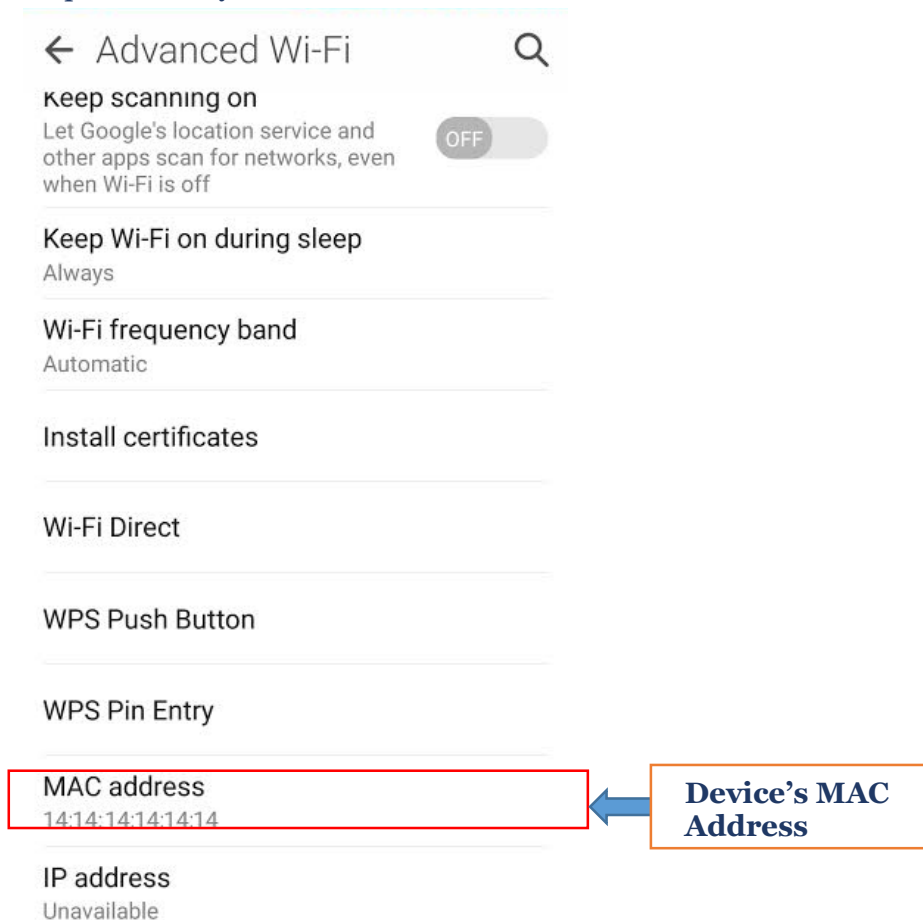


Find the MAC Address of an Android Device

Step 1: Open **Settings** > **Wi-Fi**, and touch the “More” button  on the top right corner, and select “Advanced”



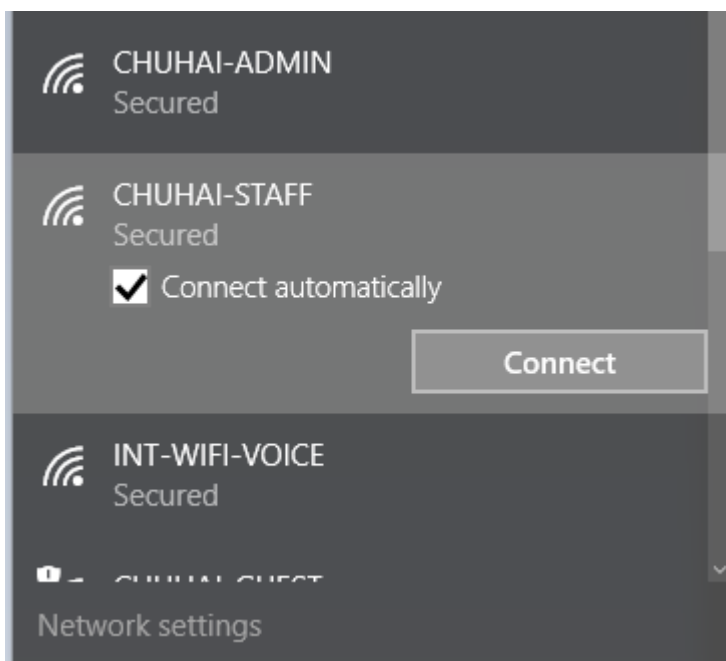
Step 2: You may find the Wi-Fi MAC address in here



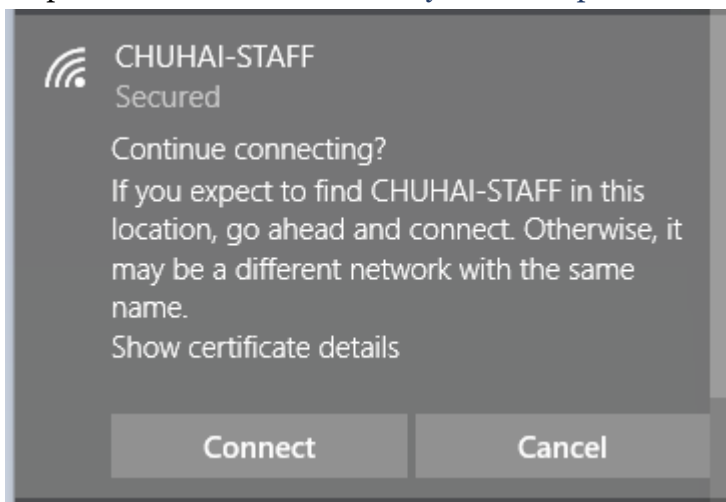
Connect to Wi-Fi Services

Connect Wi-Fi on Windows 10 Computer

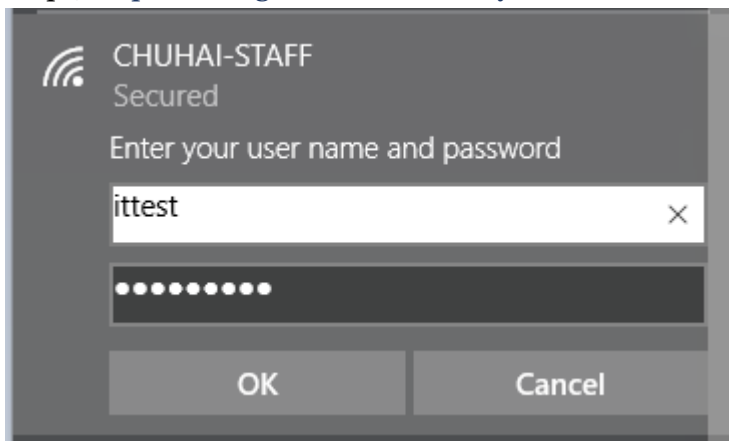
Step 1: Click the Wi-Fi button  on the bottom right corner, choose “CHUHAI-STAFF”, and click “Connect”.



Step 2: Click “Connect”. You may need to repeat this steps a few times.

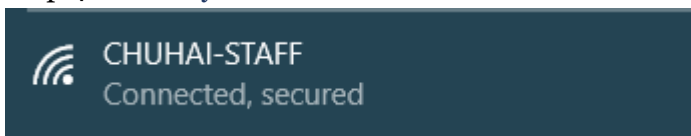


Step 3: Input the login information of your staff account.



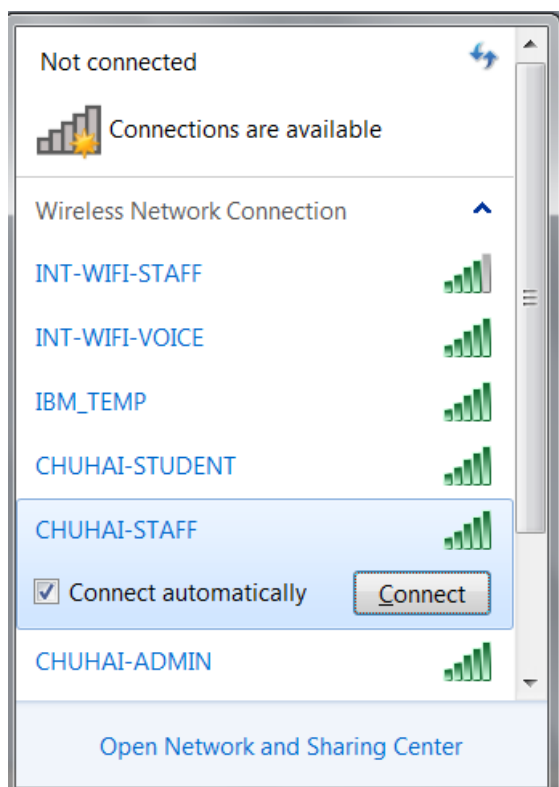
A screenshot of a Windows Wi-Fi login dialog box. The title bar shows a Wi-Fi icon, the network name 'CHUHAI-STAFF', and the status 'Secured'. The main text says 'Enter your user name and password'. There are two input fields: the first contains the text 'itttest' and has a close button (X) on the right; the second is a password field filled with dots. At the bottom are 'OK' and 'Cancel' buttons.

Step 4: You may now be able to connect to the Wi-Fi.

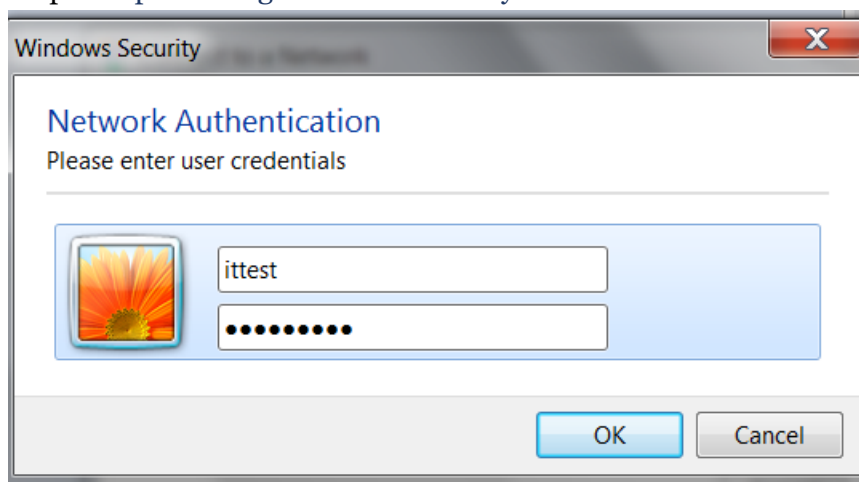


Connect Wi-Fi on Windows 7 Computer

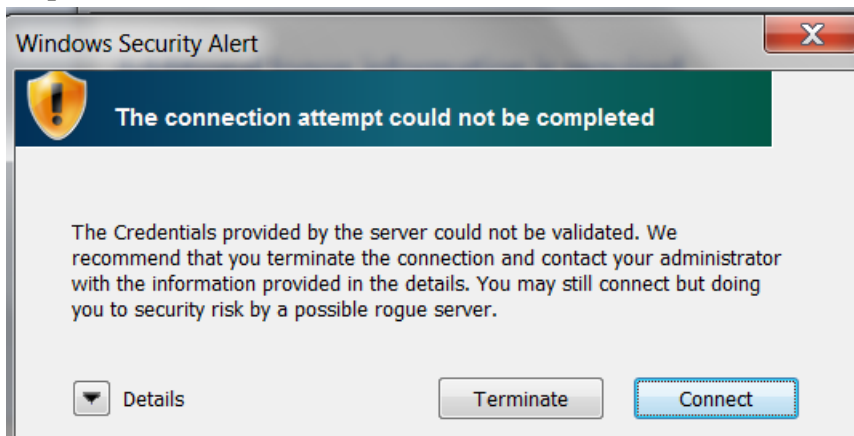
Step 1: Click the Wi-Fi button  on the bottom right corner, choose “CHUHAI-STAFF”, and click “Connect”.



Step 2: Input the login information of your staff account.



Step 3: Click “Connect”.

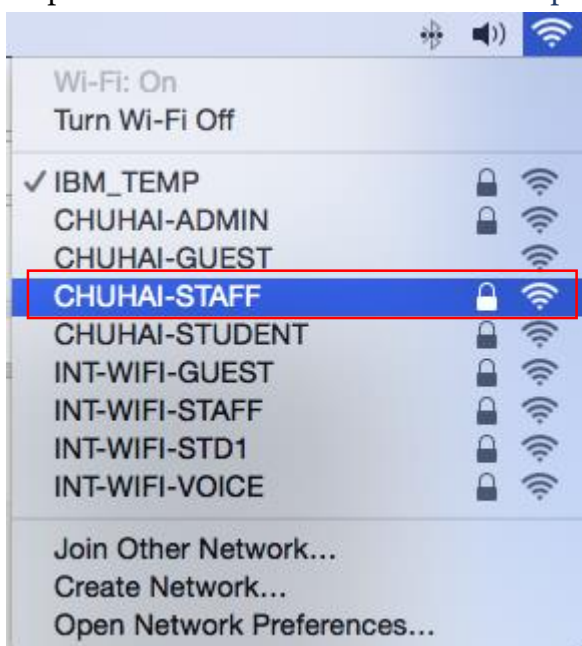


Step 4: You may now be able to connect to the Wi-Fi.

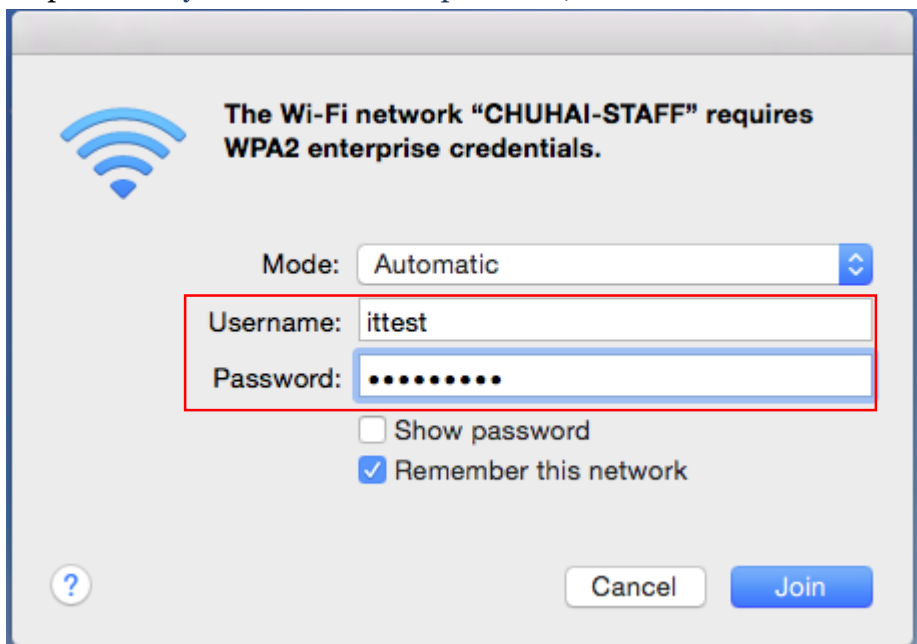


Connect Wi-Fi on Mac OSX Computer

Step 1: Click on the Wi-Fi button on the top right corner, and choose “CHUHAI-STAFF”.



Step 2: Enter your username and password, then click “Join”



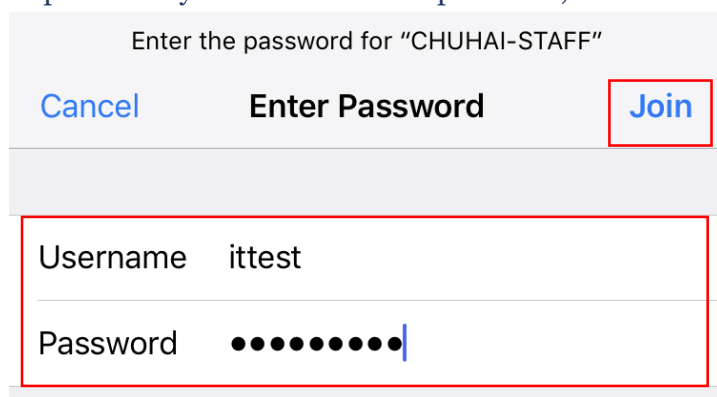
Step 3: You are now connected to the Wi-Fi.

Connect Wi-Fi on iPhone Device

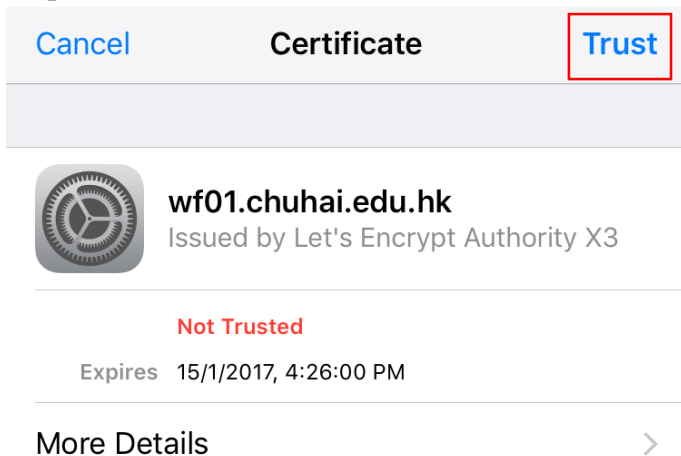
Step 1: Go to Settings > Wi-Fi, and choose “CHUHAI-STAFF”.



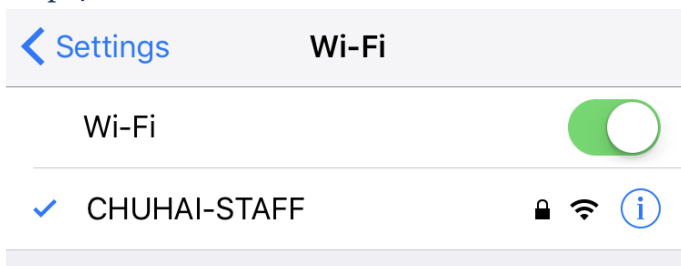
Step 2: Enter your username and password, then click “Join”



Step 3: Click “Trust”

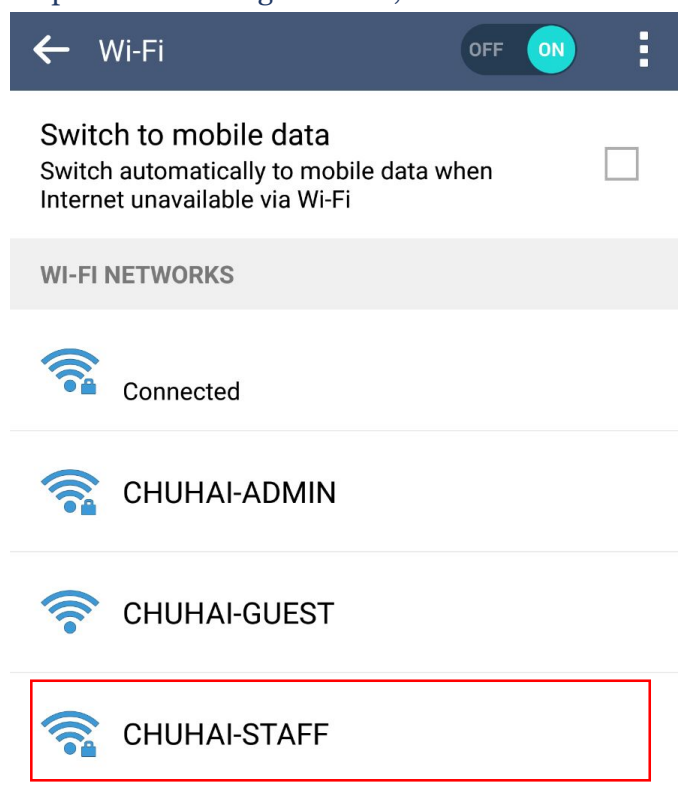


Step 4: You are now connected to the Wi-Fi.

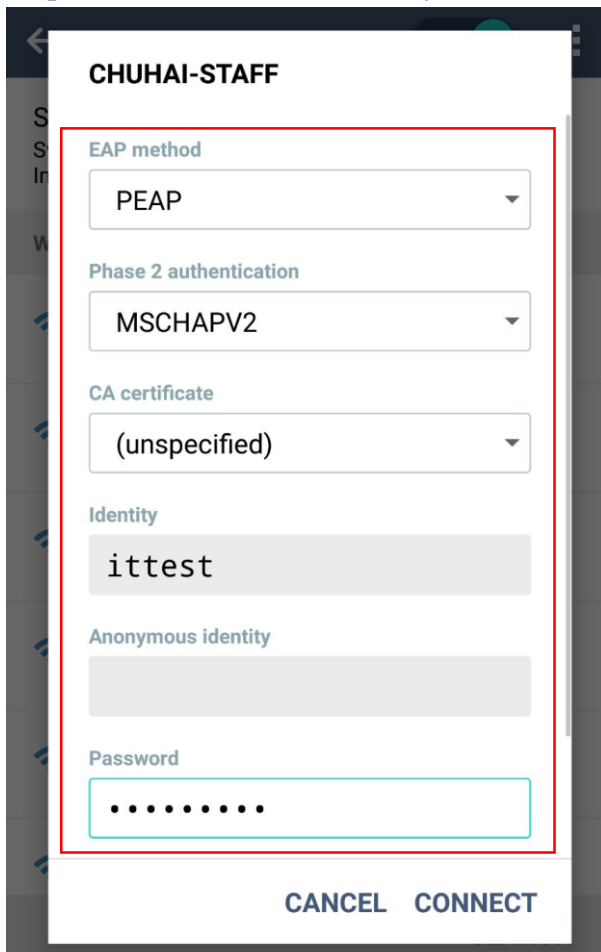


Connect Wi-Fi on Android Device

Step 1: Go to Settings > Wi-Fi, and choose “CHUHAI-STAFF”



Step 2: Set as follows, and enter your username and password.



CHUHAI-STAFF

EAP method
PEAP

Phase 2 authentication
MSCHAPV2

CA certificate
(unspecified)

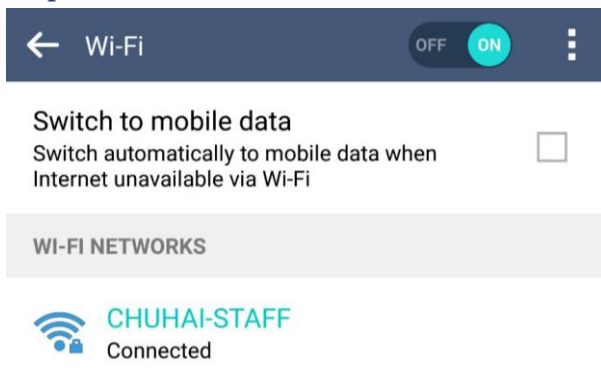
Identity
ittest

Anonymous identity

Password
.....

CANCEL CONNECT


Step 3: You are now connected to the Wi-Fi.



← Wi-Fi OFF ON

Switch to mobile data
Switch automatically to mobile data when Internet unavailable via Wi-Fi ☐

WI-FI NETWORKS

 **CHUHAI-STAFF**
Connected